

Issue 58 April 2014

Motifs & Templates



Use these guides to get started today

FIND THE TEMPLATE YOU REQUIRE ON THE CONTENTS LIST BELOW AND JUST PRINT OUT THE PAGE OR PAGES YOU NEED FROM YOUR PRINT MENU

In your print menu, under Size Options, be sure to select print 'Actual Size', instead of 'Fit to Page'

Page 2-3

Title: Peter Pan collar
Designer: Kate Haxell
Magazine page: 38

Page 4-6

Title: Baby giraffe
Designer: Louise Nichols
Magazine page: 48

Page 7

Title: Block of the month
Designer: Corinne Bradd
Magazine page: 61

Page 8-10

Title: Chicken doorstep
Designer: Lucinda Ganderton
Magazine page: 74

Page 11

Title: Bird cushions
Designer: Susie Johns
Magazine page: 76

Page 12

Title: Easter tree decorations
Designer: Sandra Hamilton
Magazine page: 79

Page 13-17

Title: Mrs Fox
Designer: Ellen Kharade
Magazine page: 84

Page 18-20

Title: Bunny rabbit
Designer: Ellen Kharade
Magazine page: 87

Page 21-22

Title: Unicorn toy
Designer: Corinne Bradd
Magazine page: 90

Page 23-27

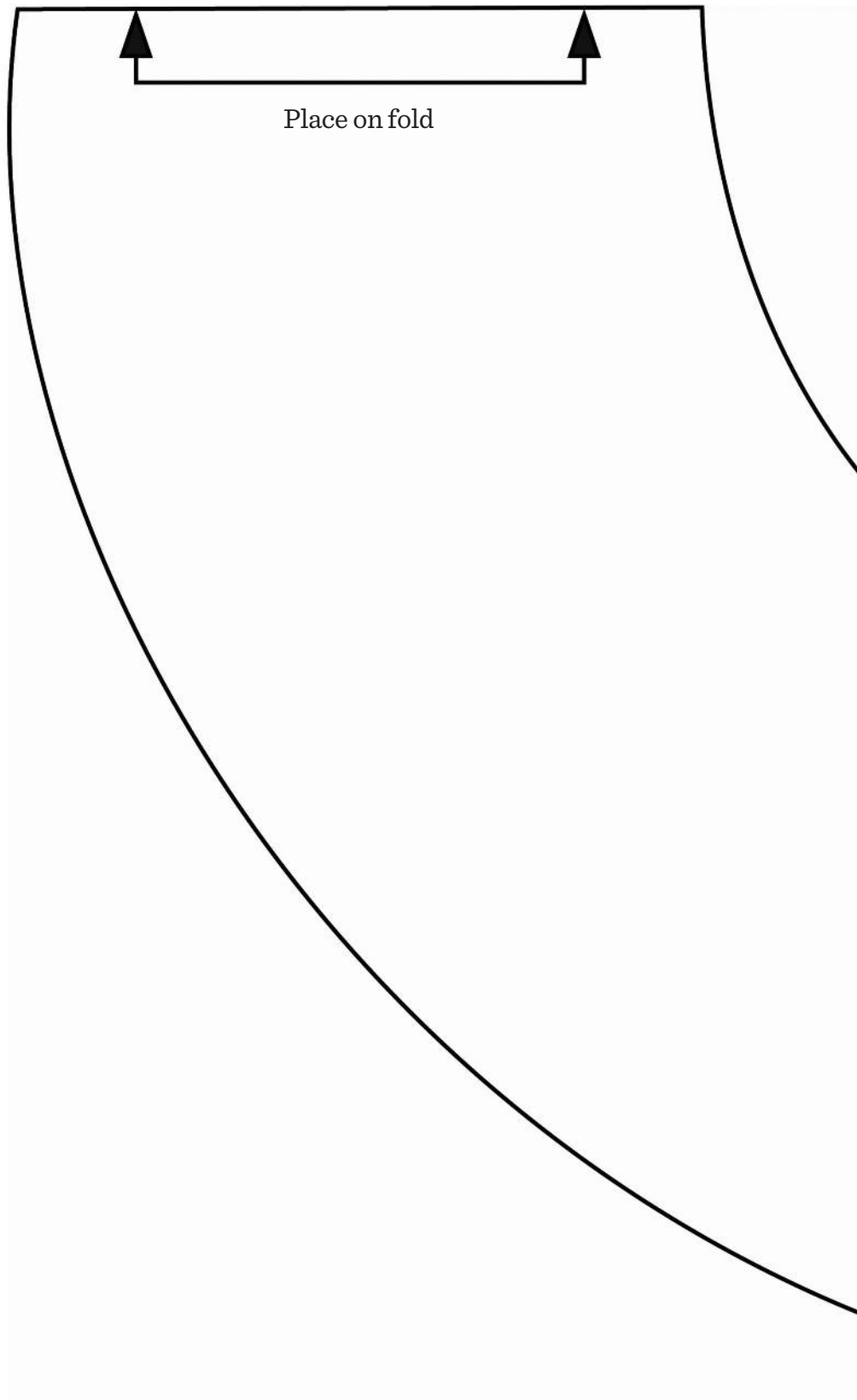
Collect & Keep Cross Stitch Library
Magazine page: 96

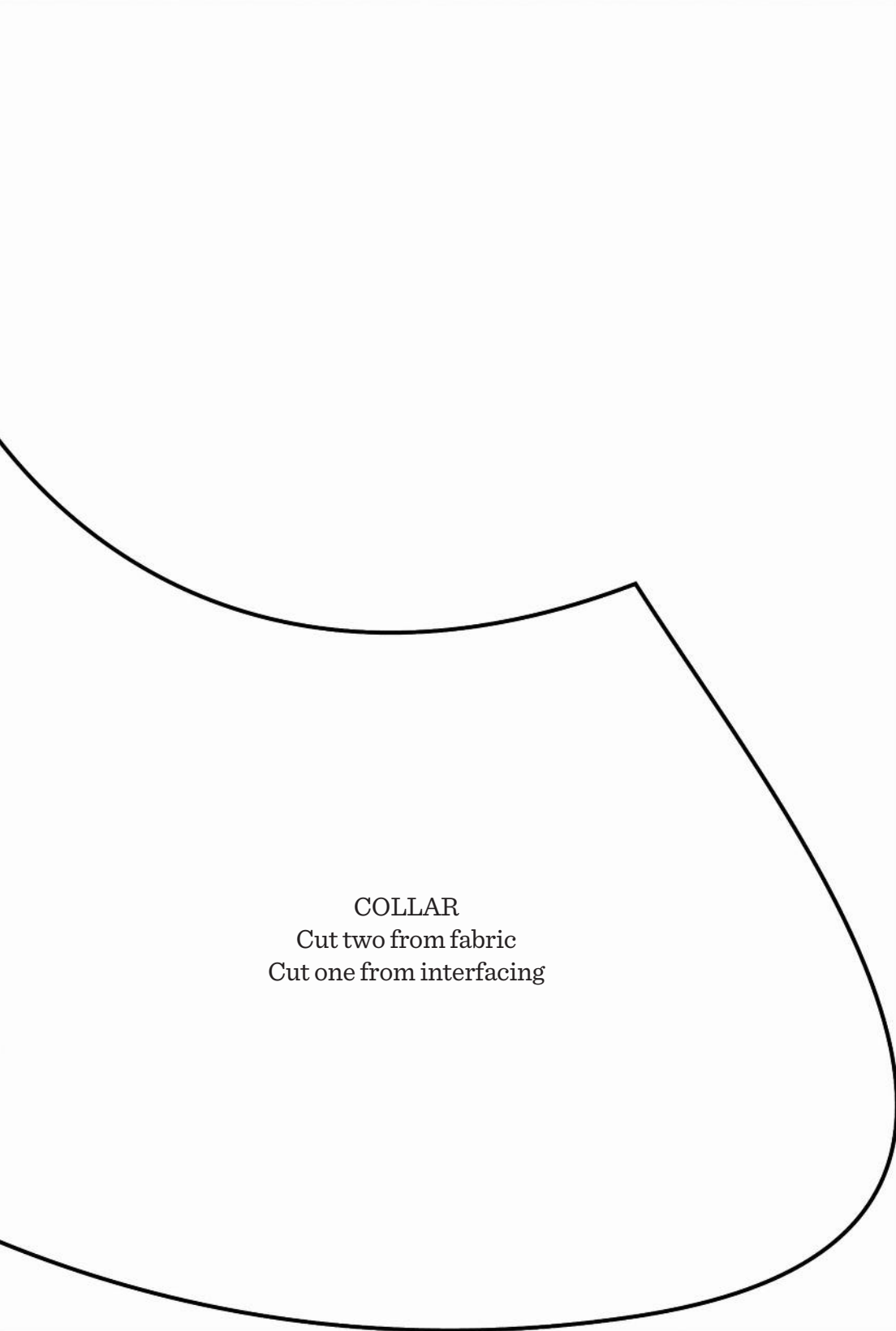
Page 2-3

Title: Peter Pan collar

Designer: Kate Haxell

Magazine page: 38





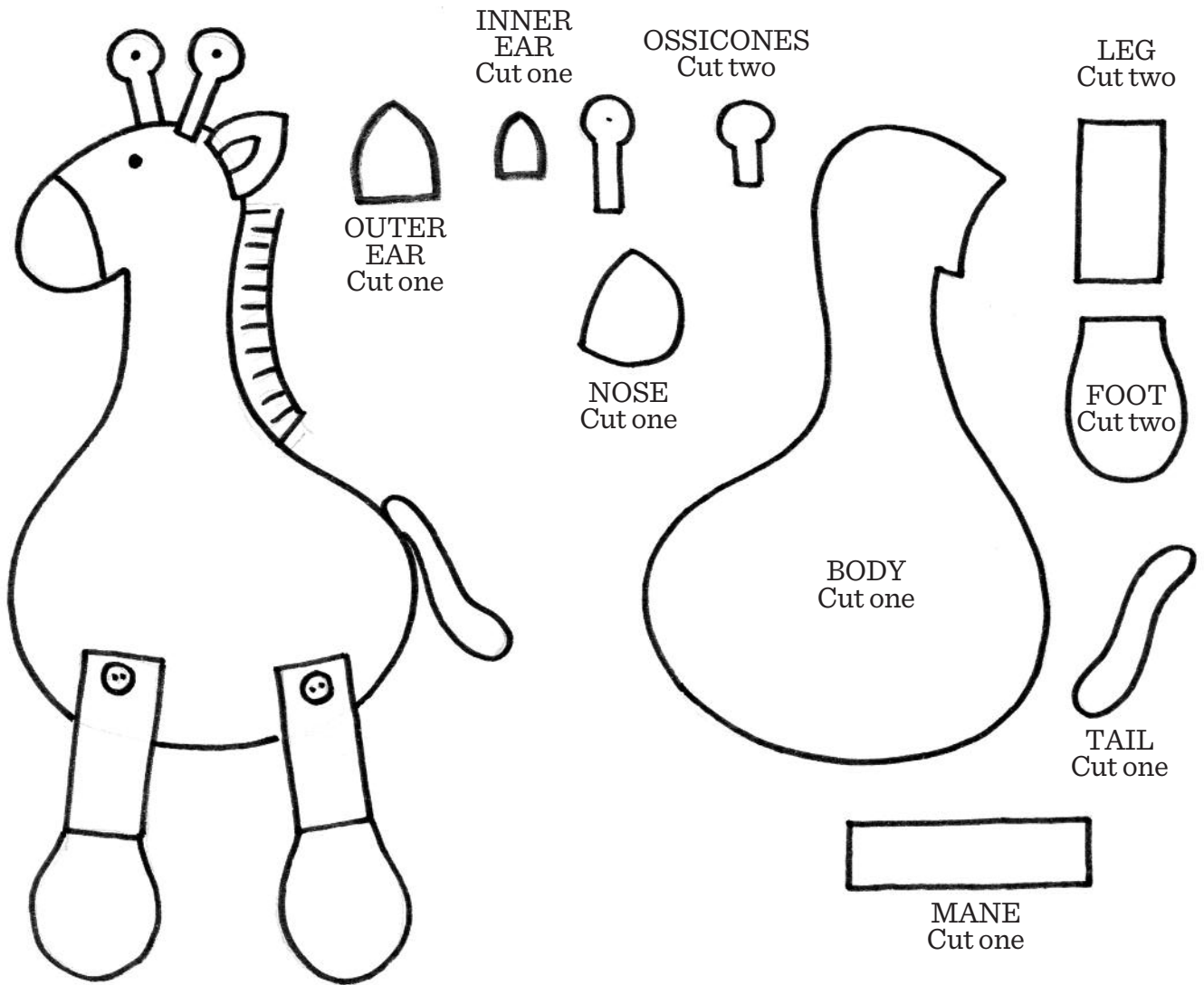
COLLAR
Cut two from fabric
Cut one from interfacing

Title: Baby giraffe

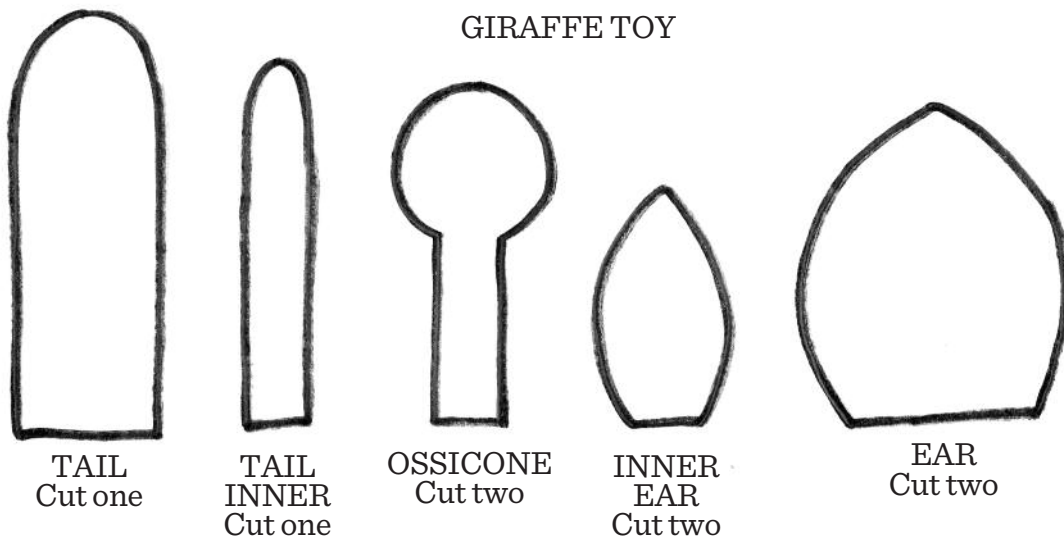
Designer: Louise Nichols

Magazine page: 48

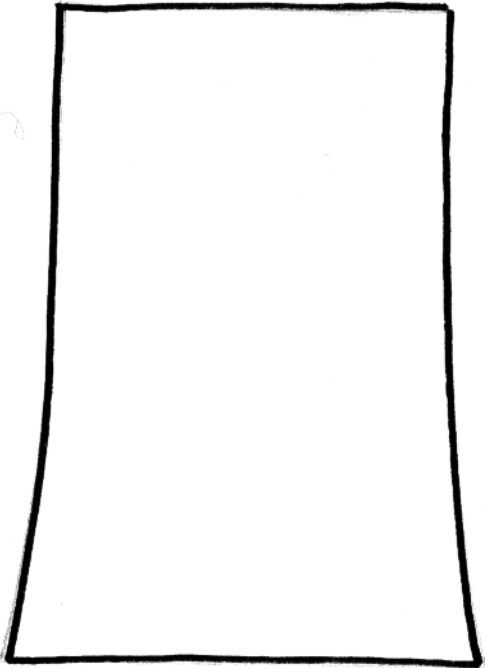
APPLIQUÉ CUSHION



GIRAFFE TOY



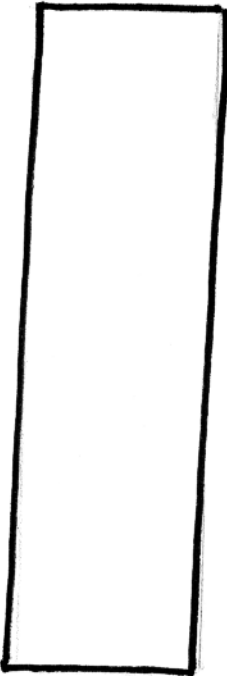
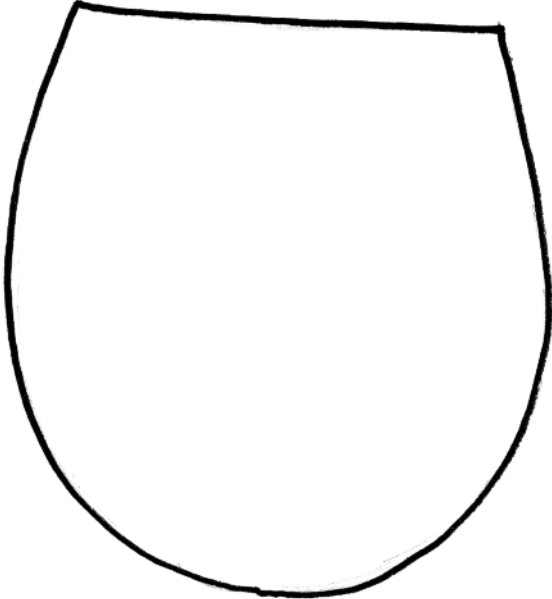
LEG
Cut one



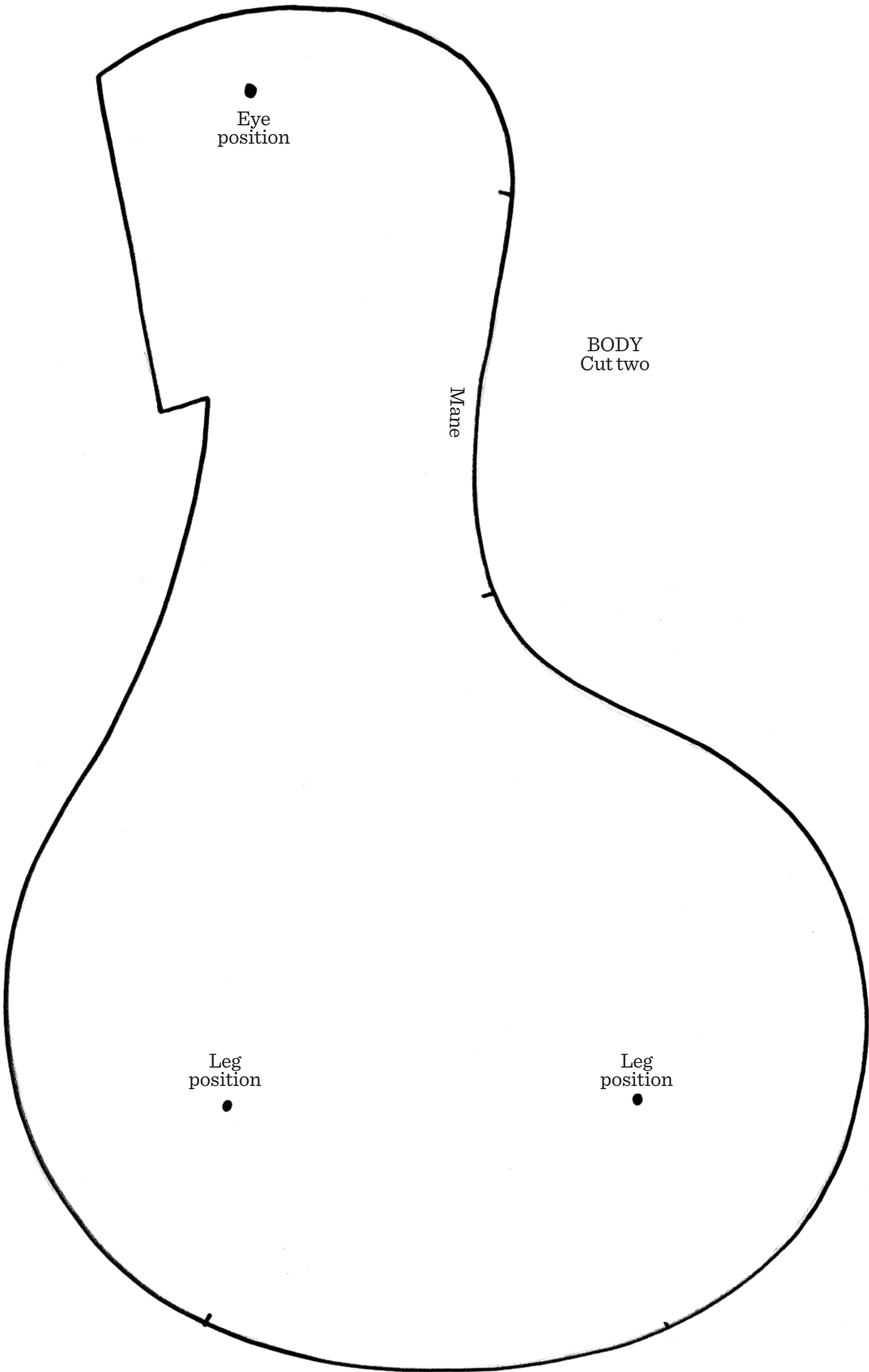
NOSE
Cut two



FOOT
Cut eight



MANE
Cut one



●
Eye
position

BODY
Cut two

Mane

Leg
position
●

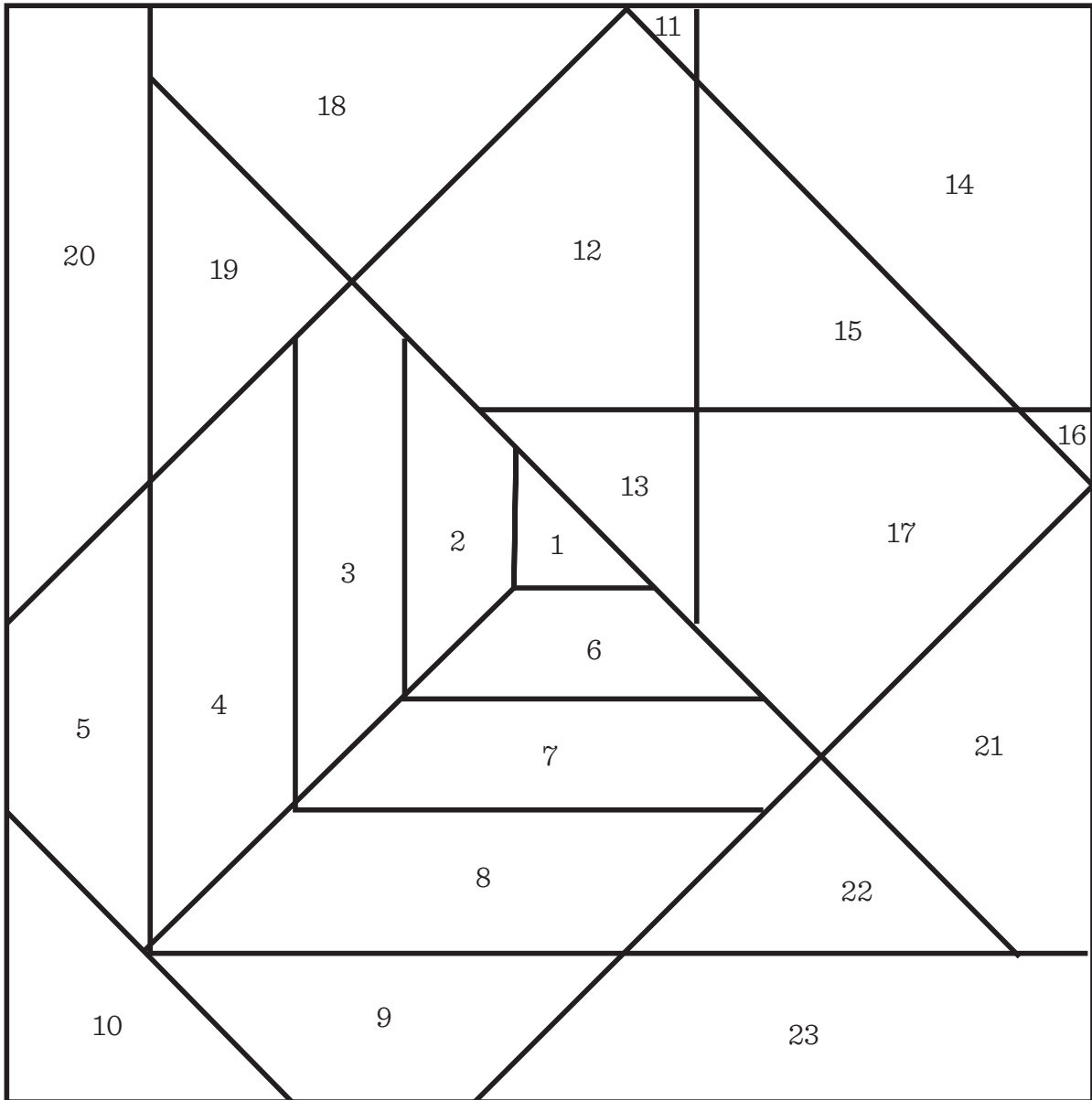
Leg
position
●

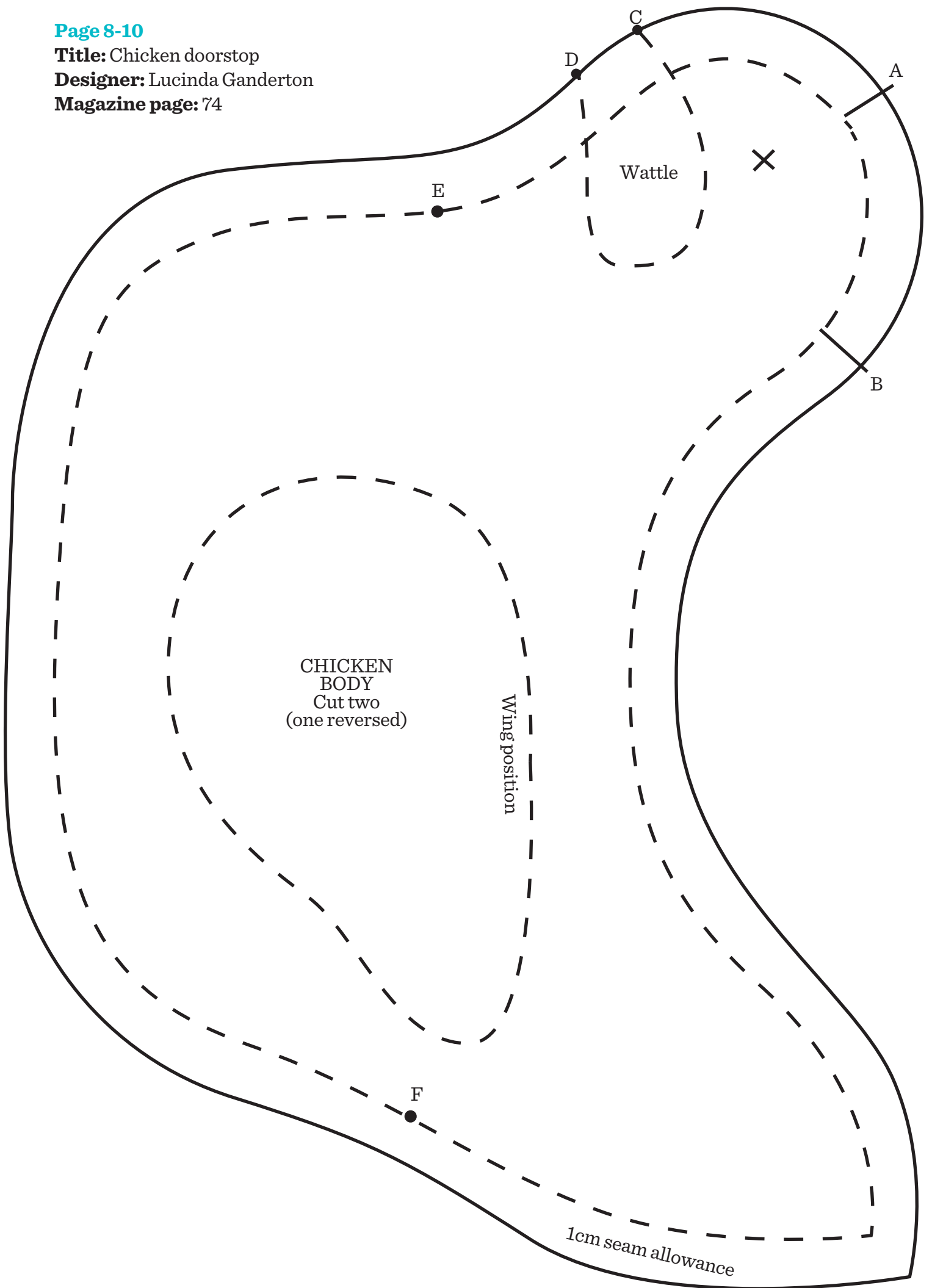
Title: Block of the month

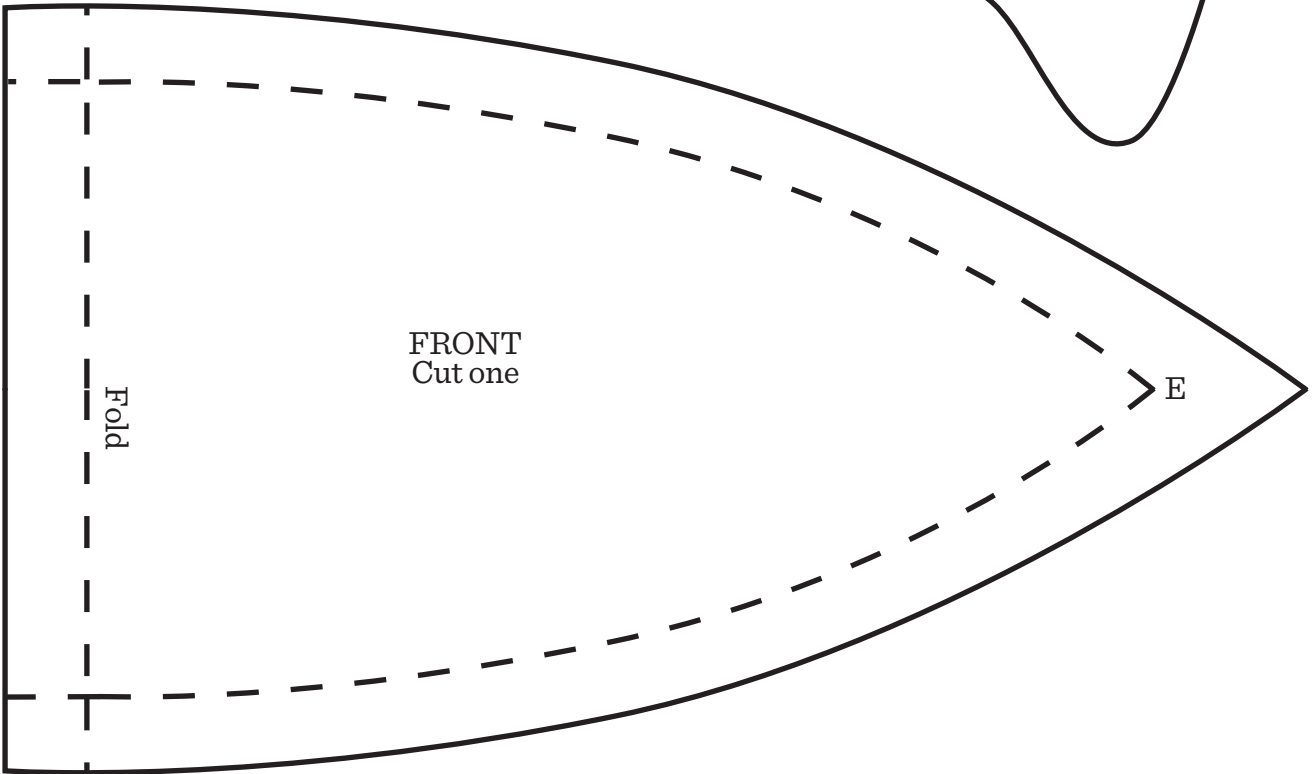
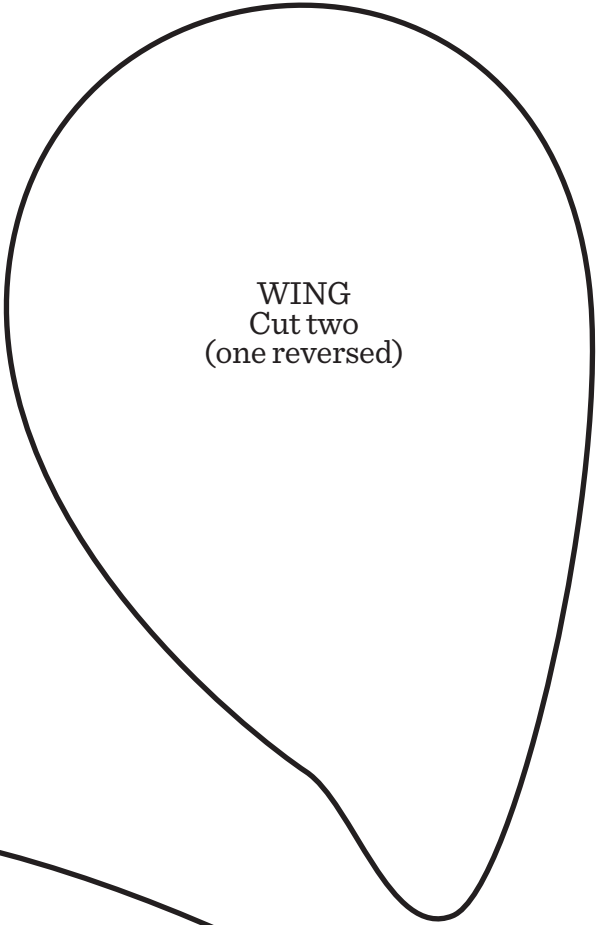
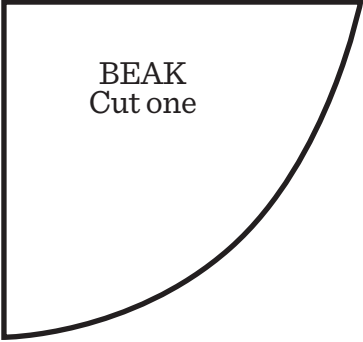
Designer: Corinne Bradd

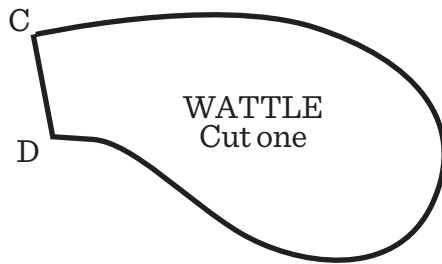
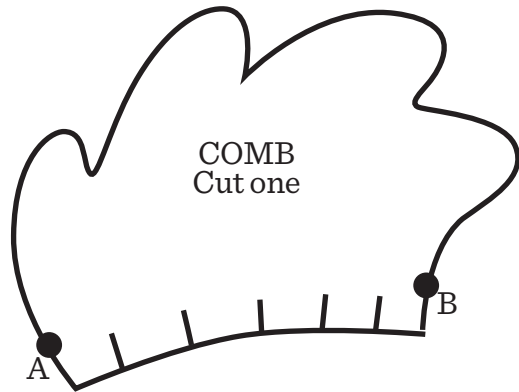
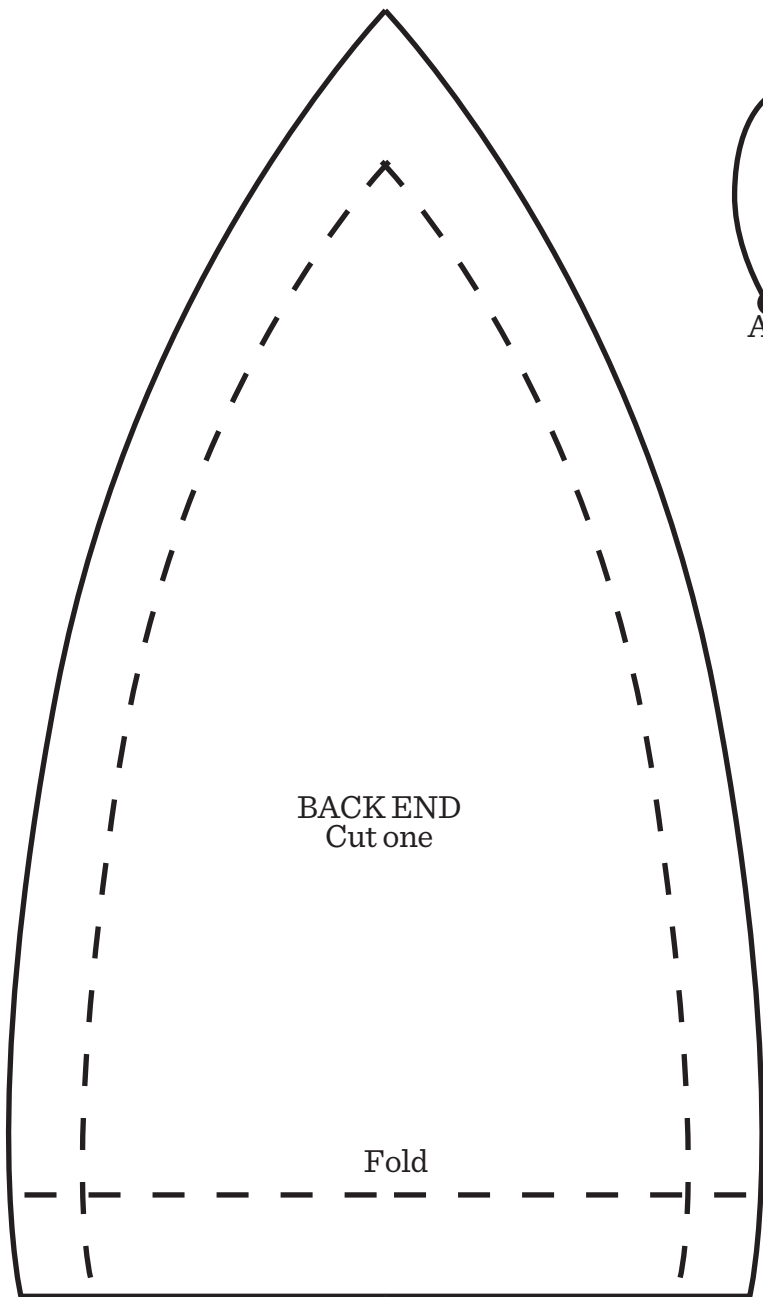
Magazine page: 61

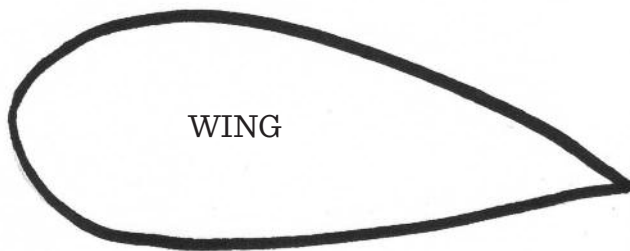
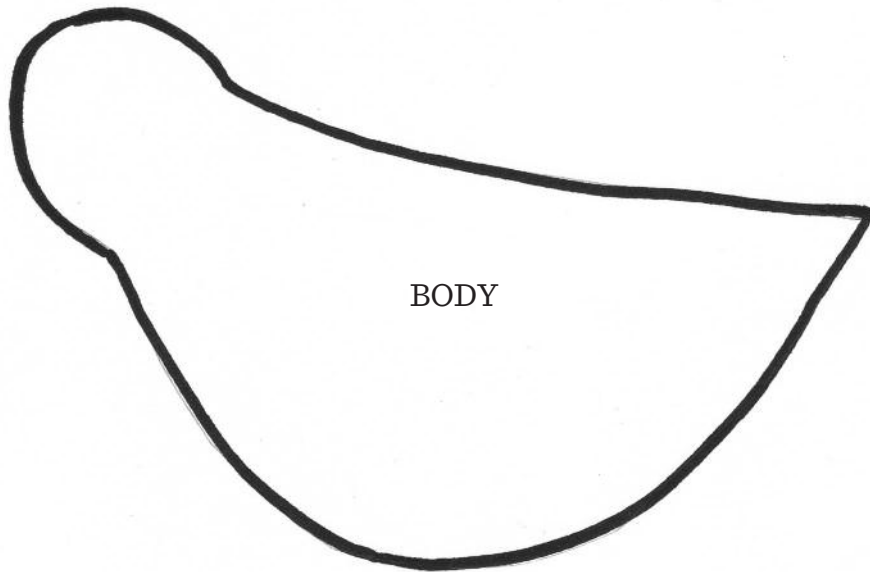
OWL
BLOCK

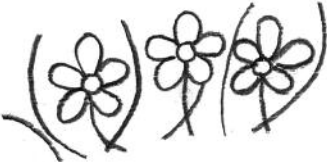
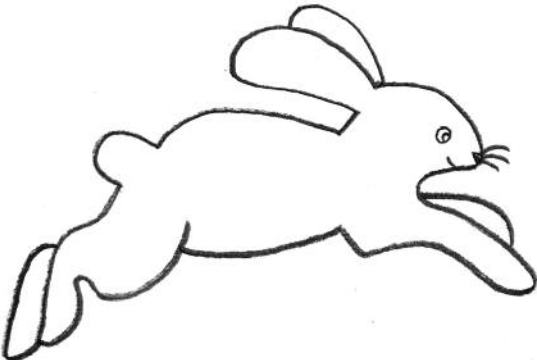
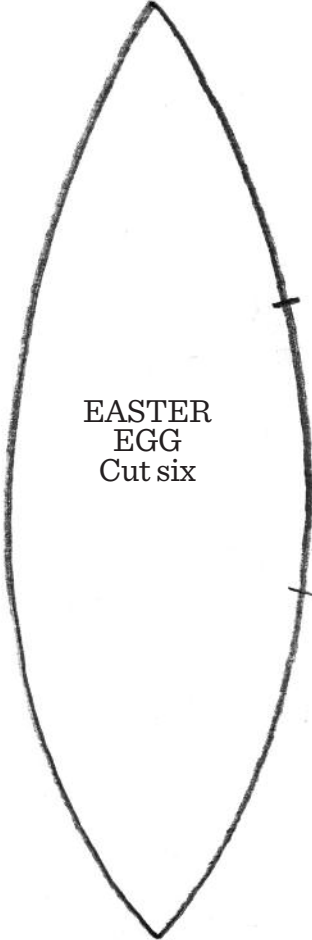










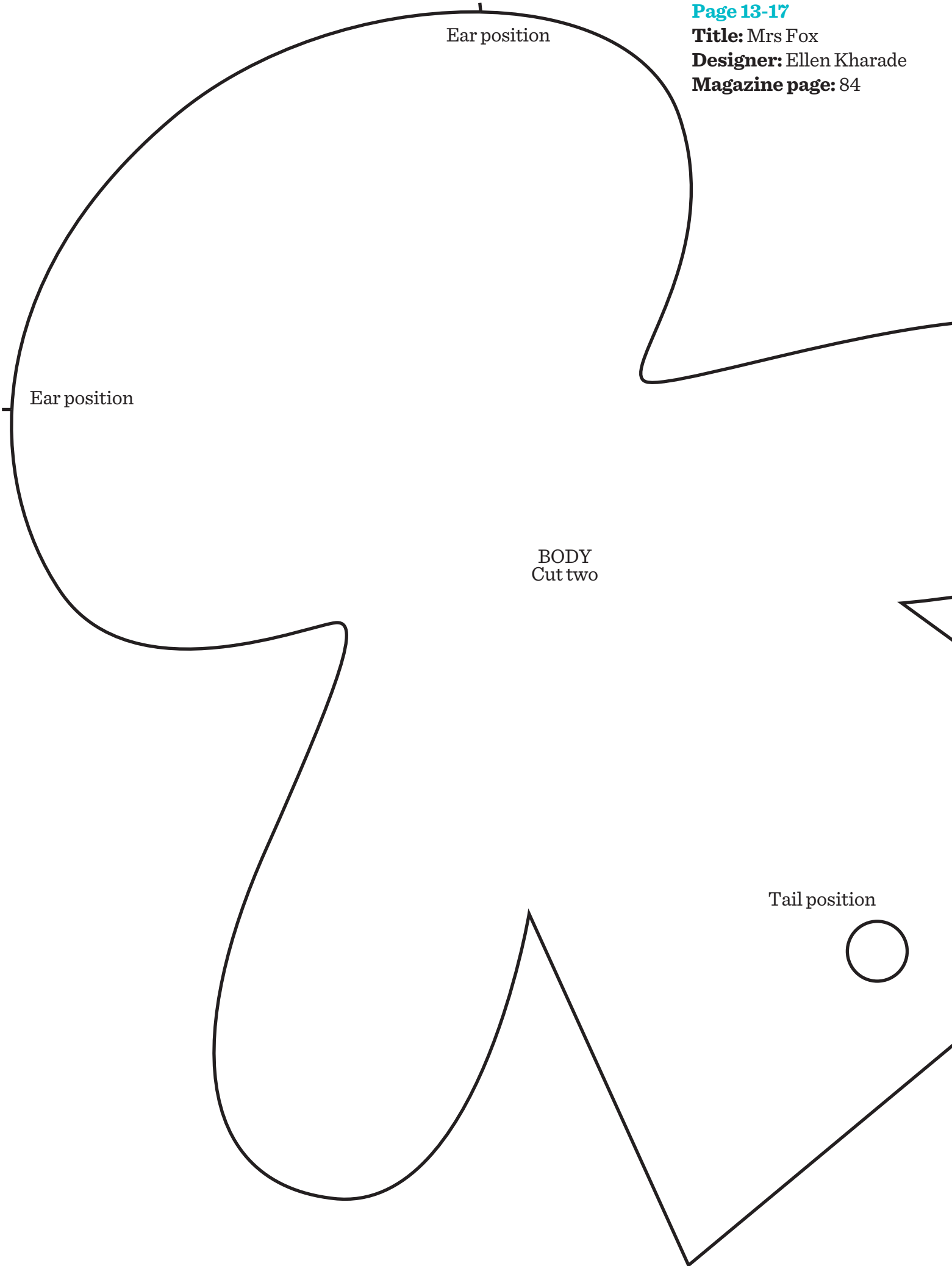


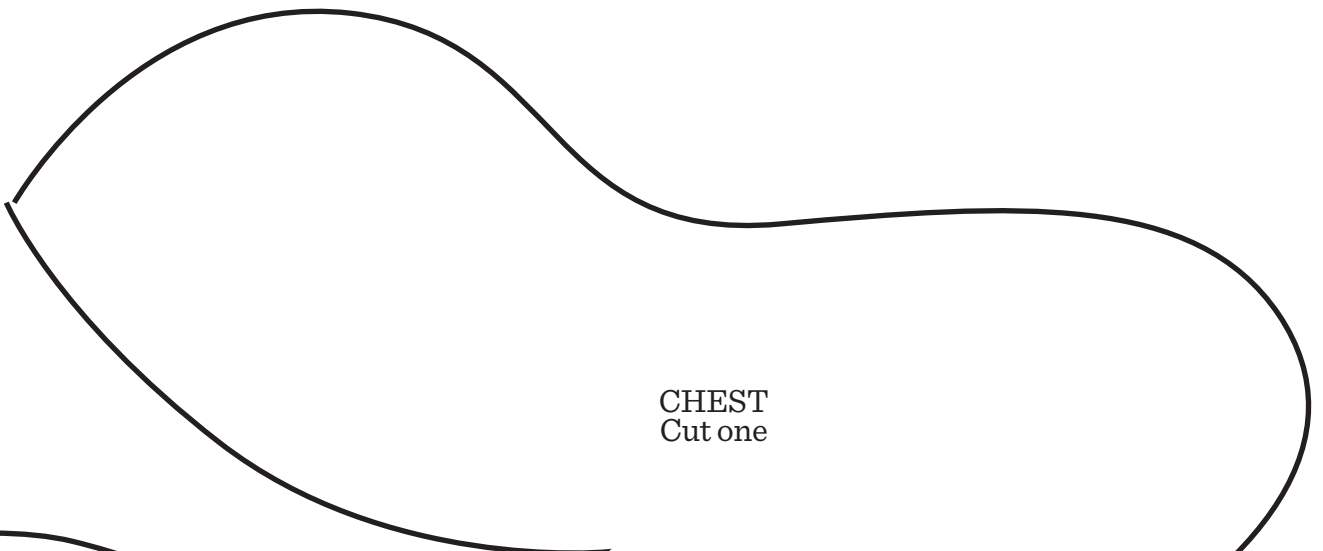
Ear position

Ear position

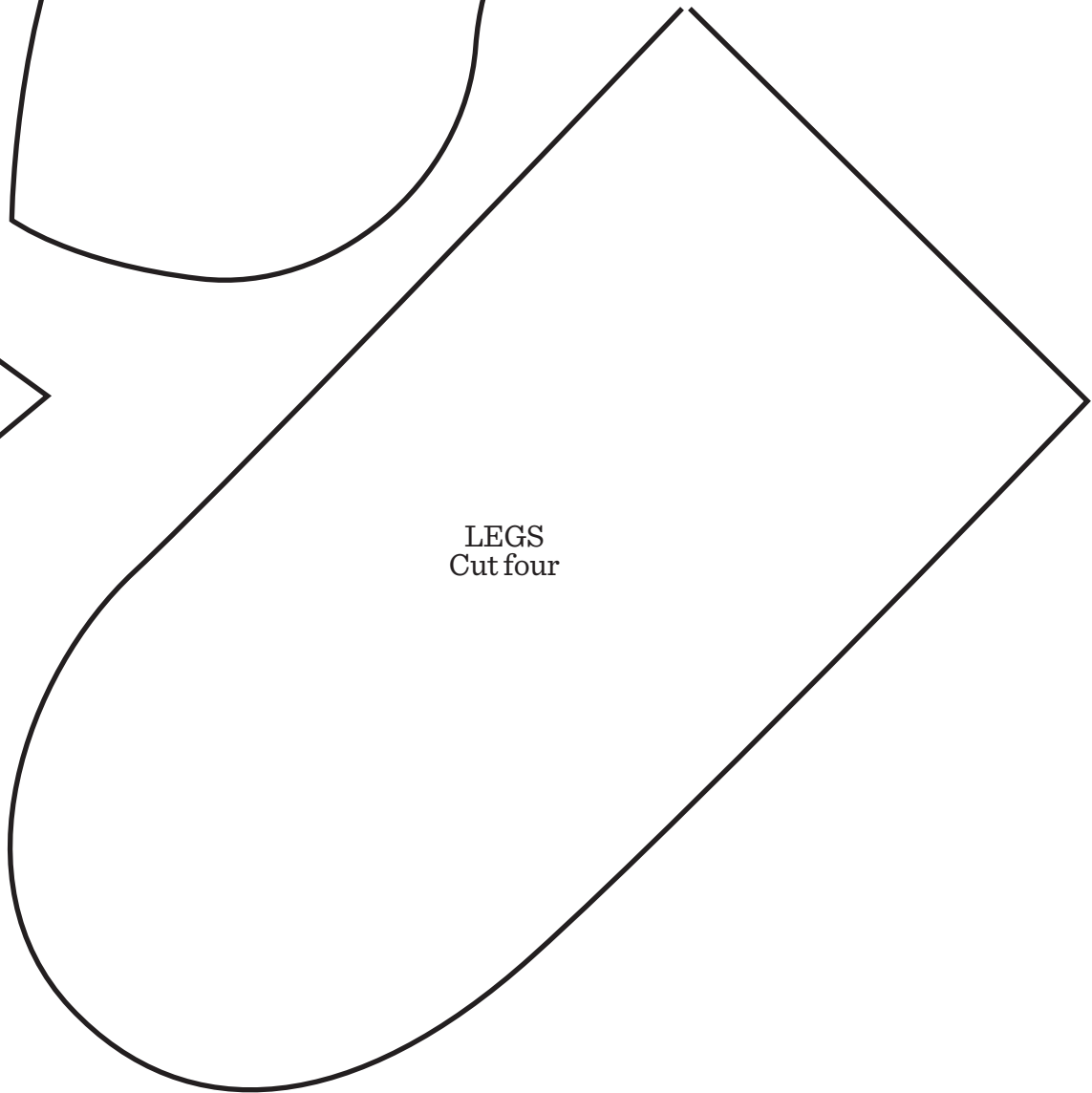
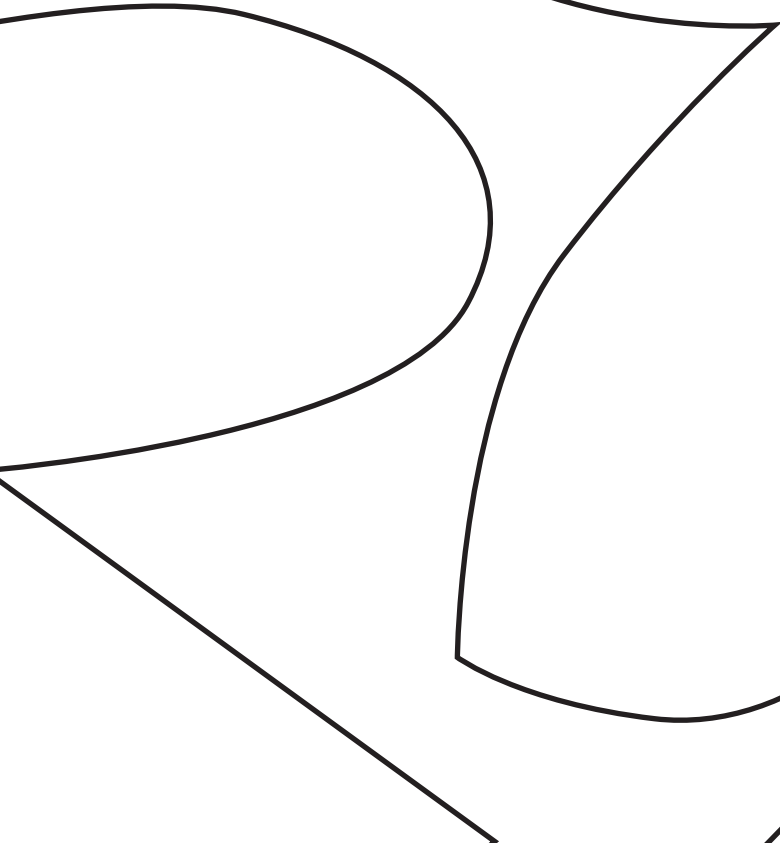
BODY
Cut two

Tail position





CHEST
Cut one



LEGS
Cut four



DRESS
Cut two

Waistline



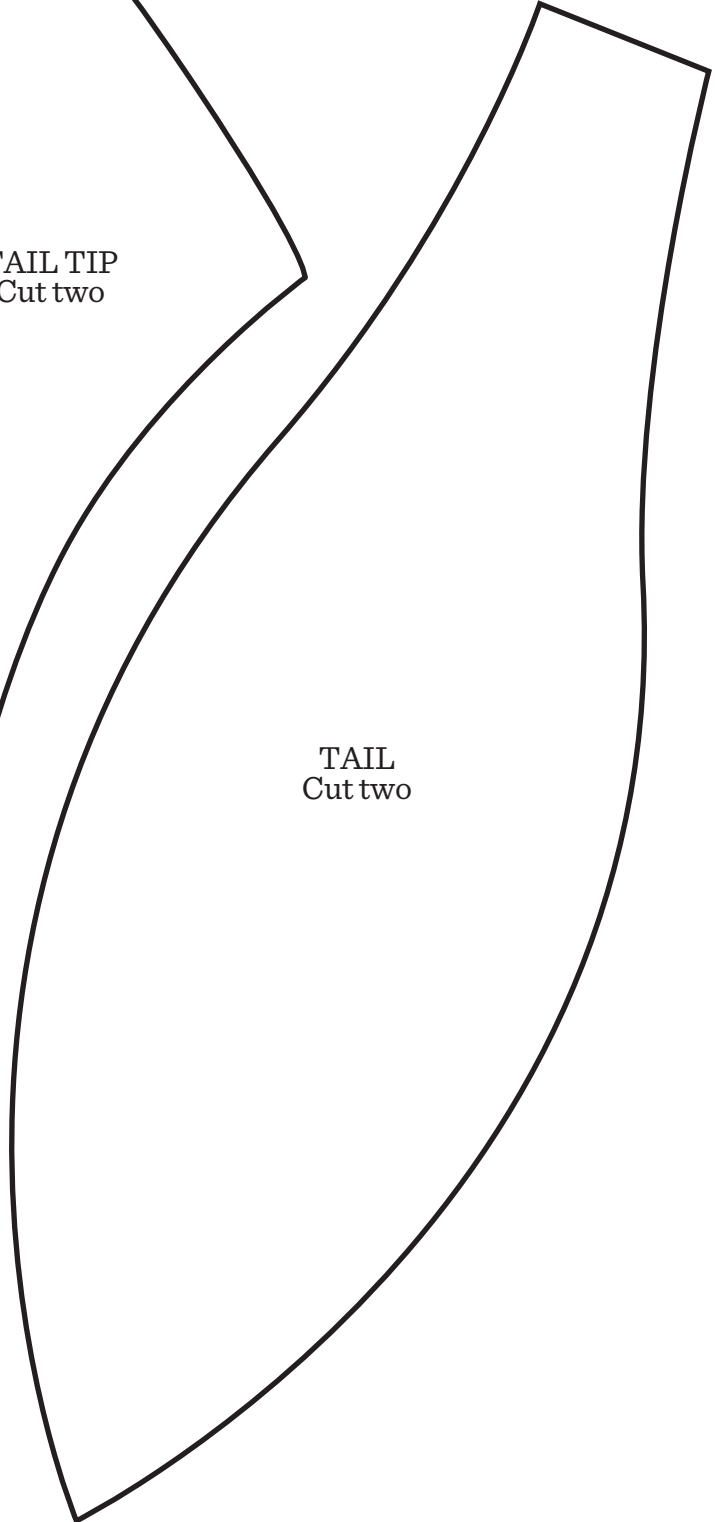
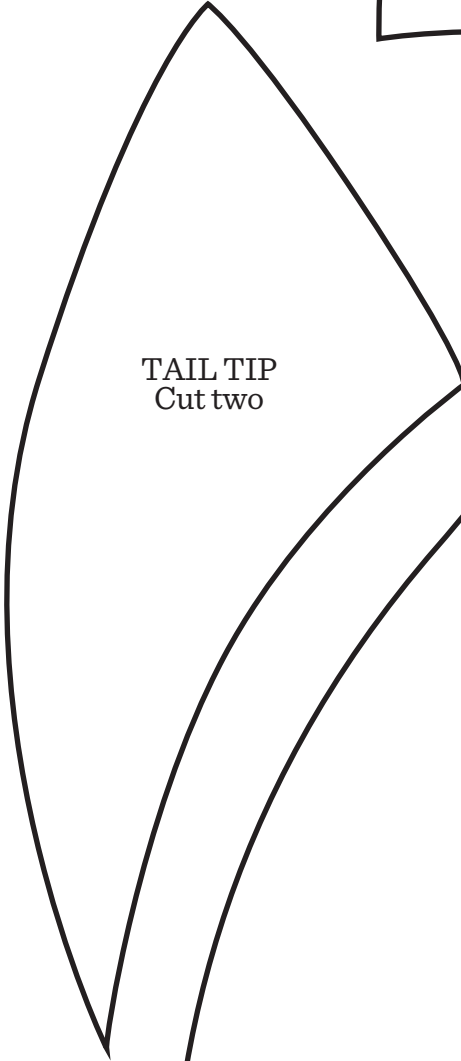
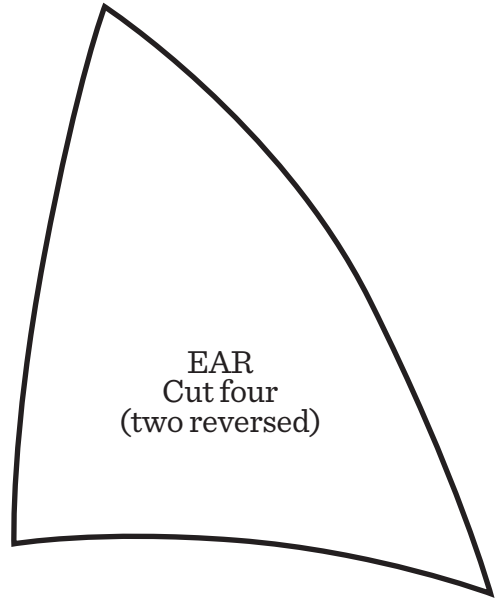
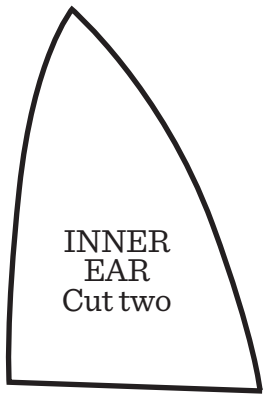
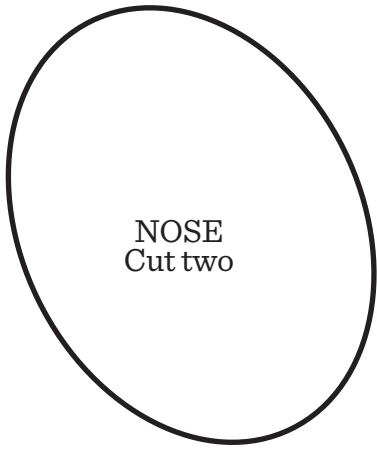
JACKET BACK
Cut one

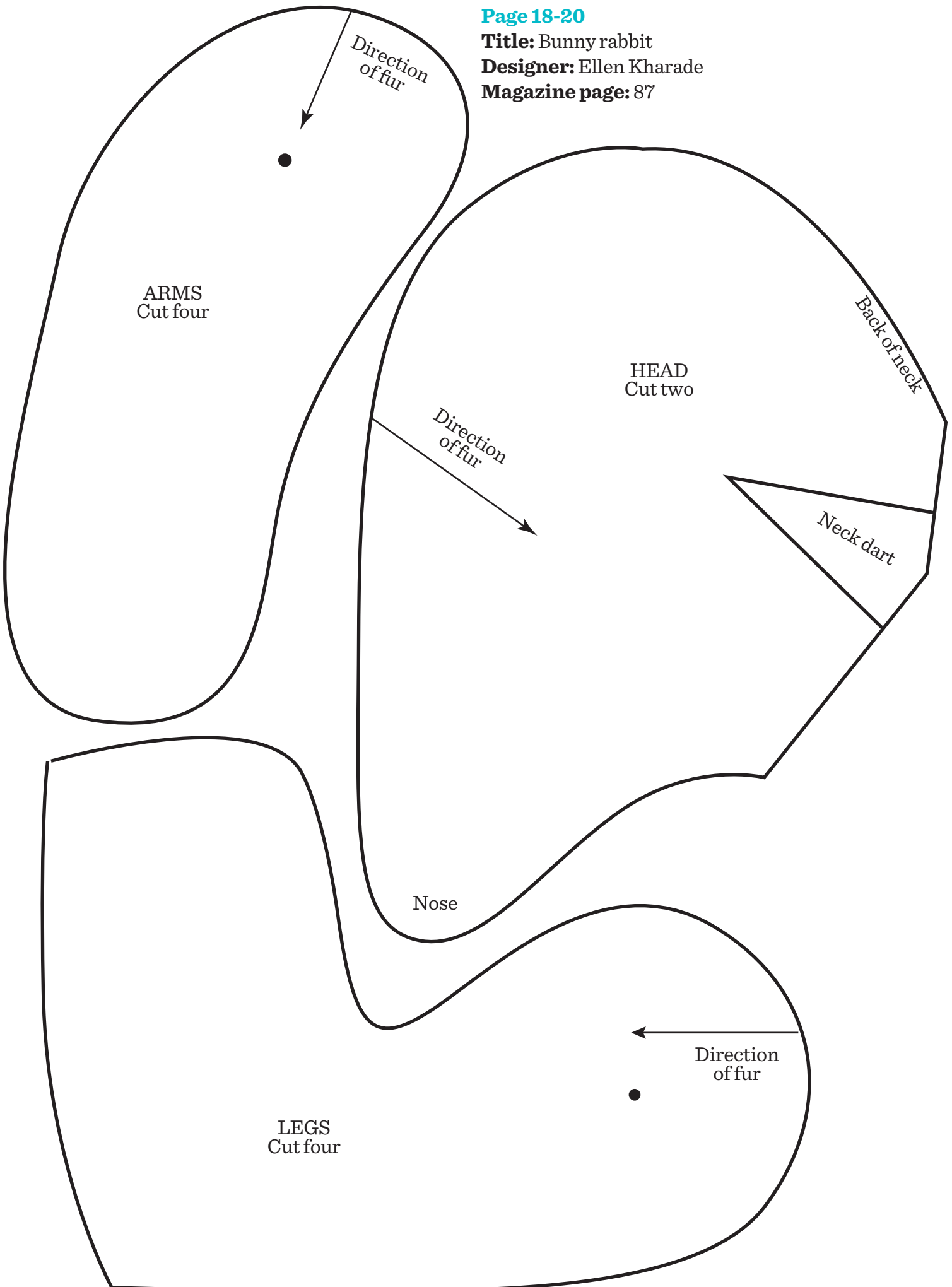
This is a pattern piece for the back of a jacket. It features a curved neckline at the top, a straight hem at the bottom, and a curved waistline. There are two large, curved armholes on either side. The piece is labeled 'JACKET BACK' and 'Cut one'.

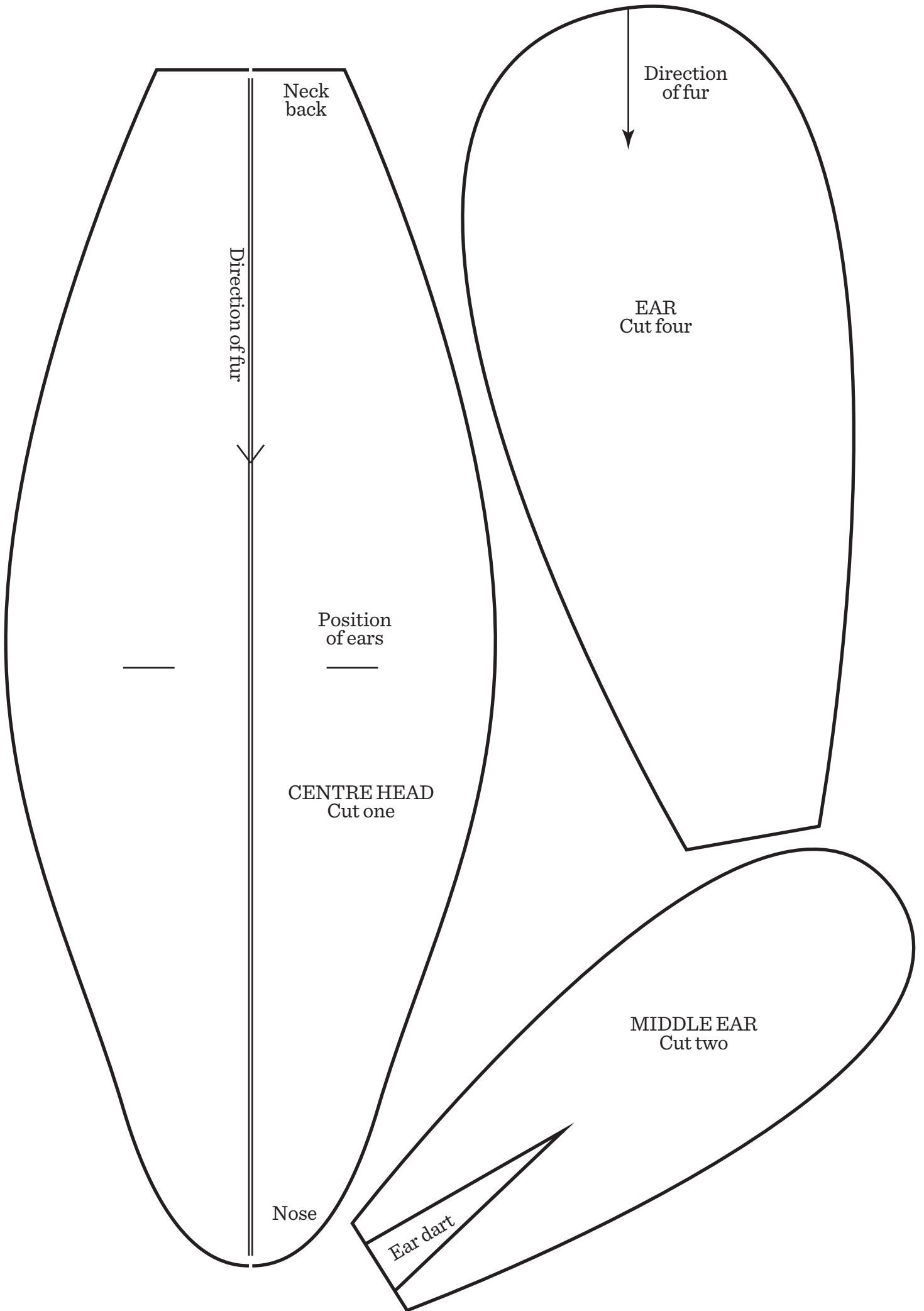


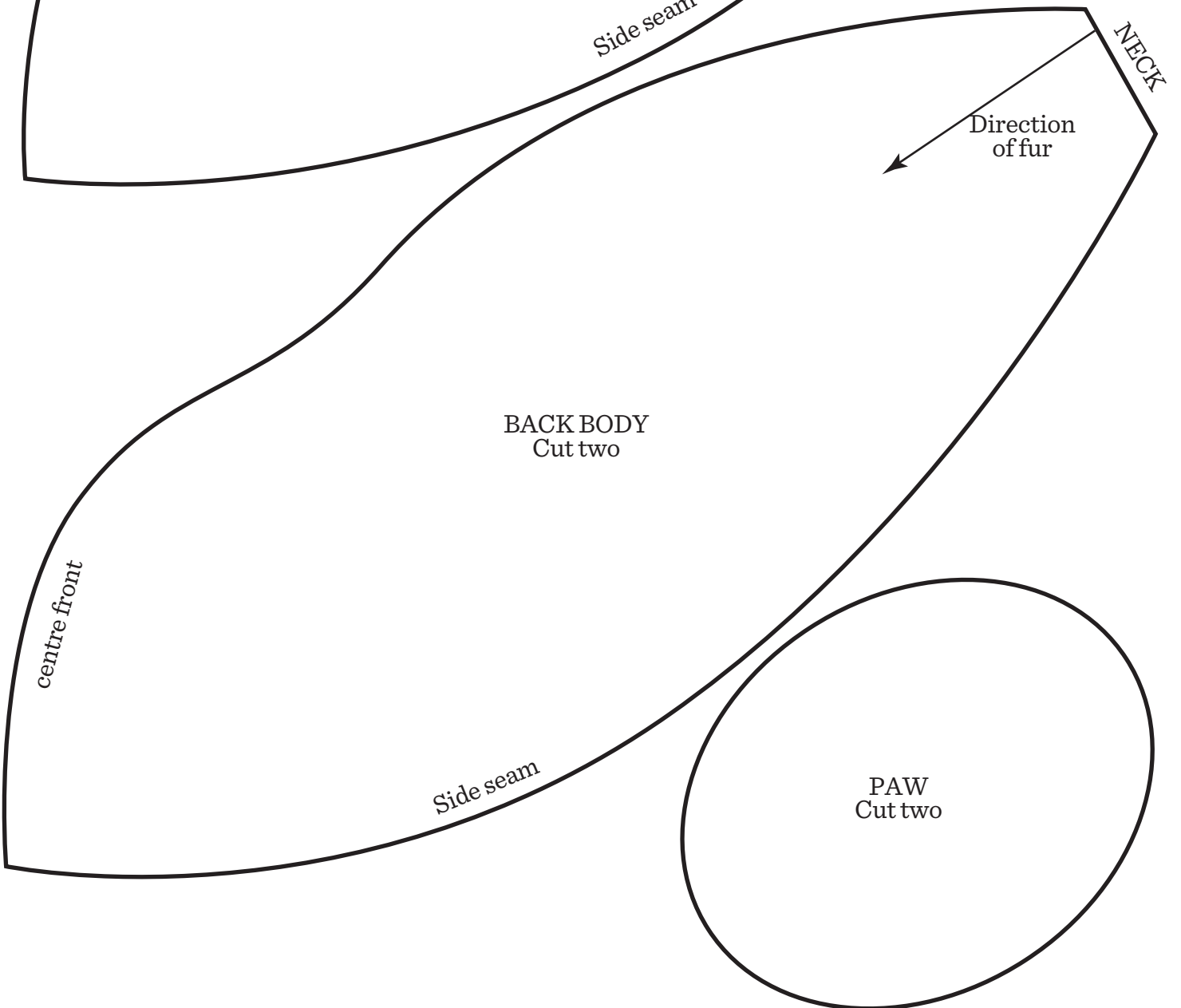
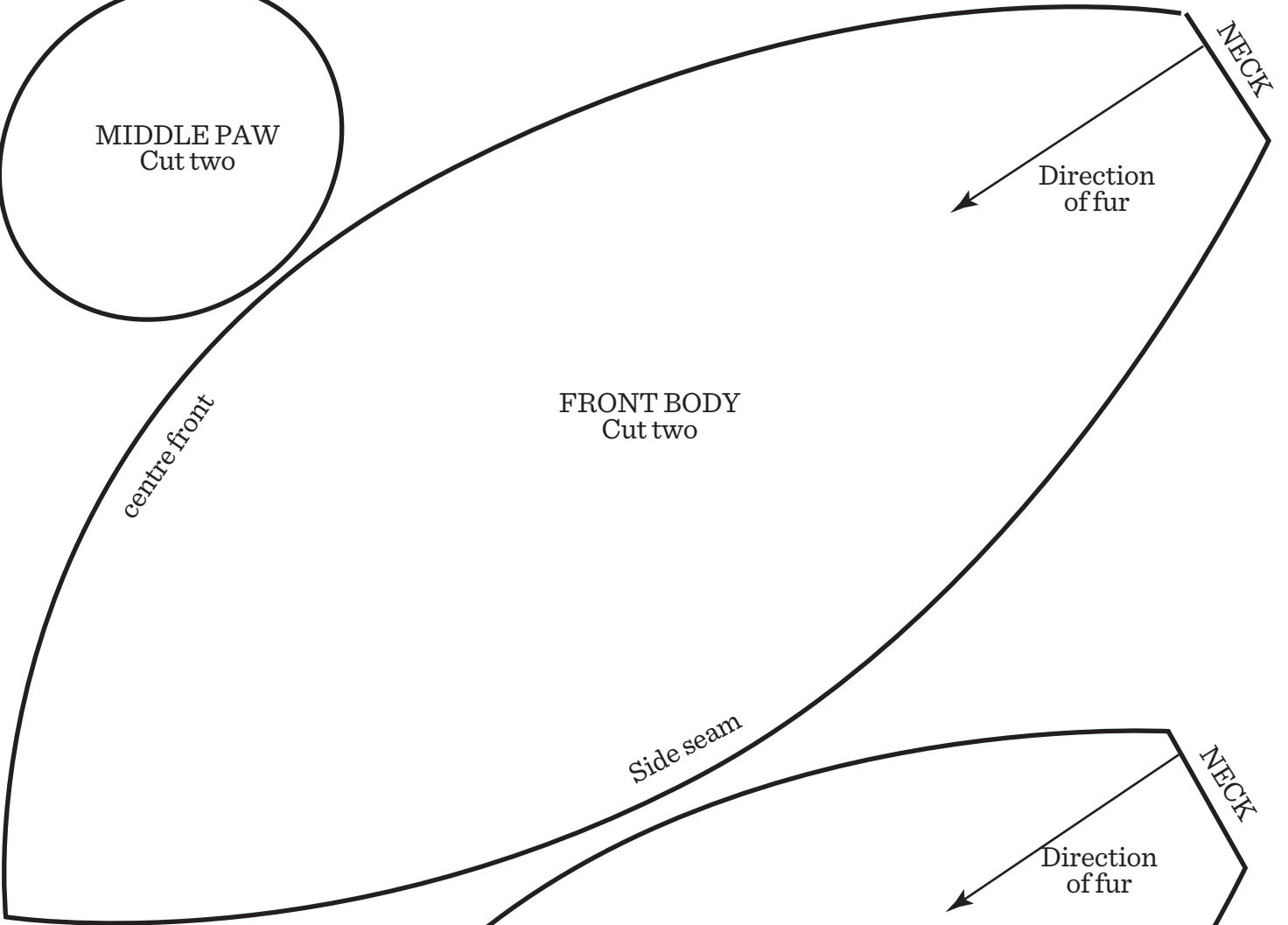
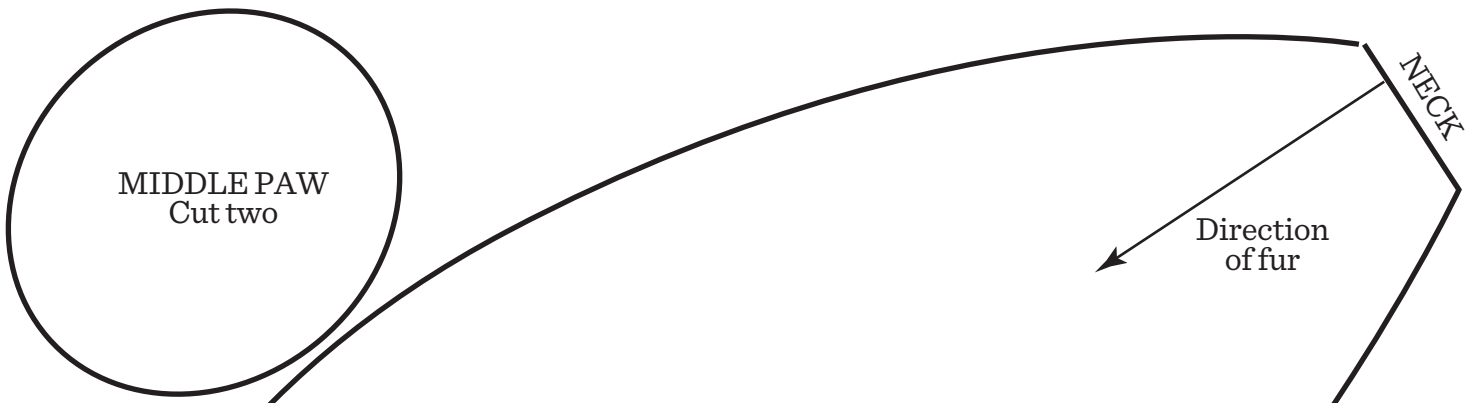
JACKET
FRONT
Cut two
(One reversed)

This is a pattern piece for the front of a jacket. It features a curved neckline at the top, a straight hem at the bottom, and a curved waistline. There is one large, curved armhole on the right side. The piece is labeled 'JACKET FRONT', 'Cut two', and '(One reversed)'. There is also a partial pattern piece visible on the left side of the page.





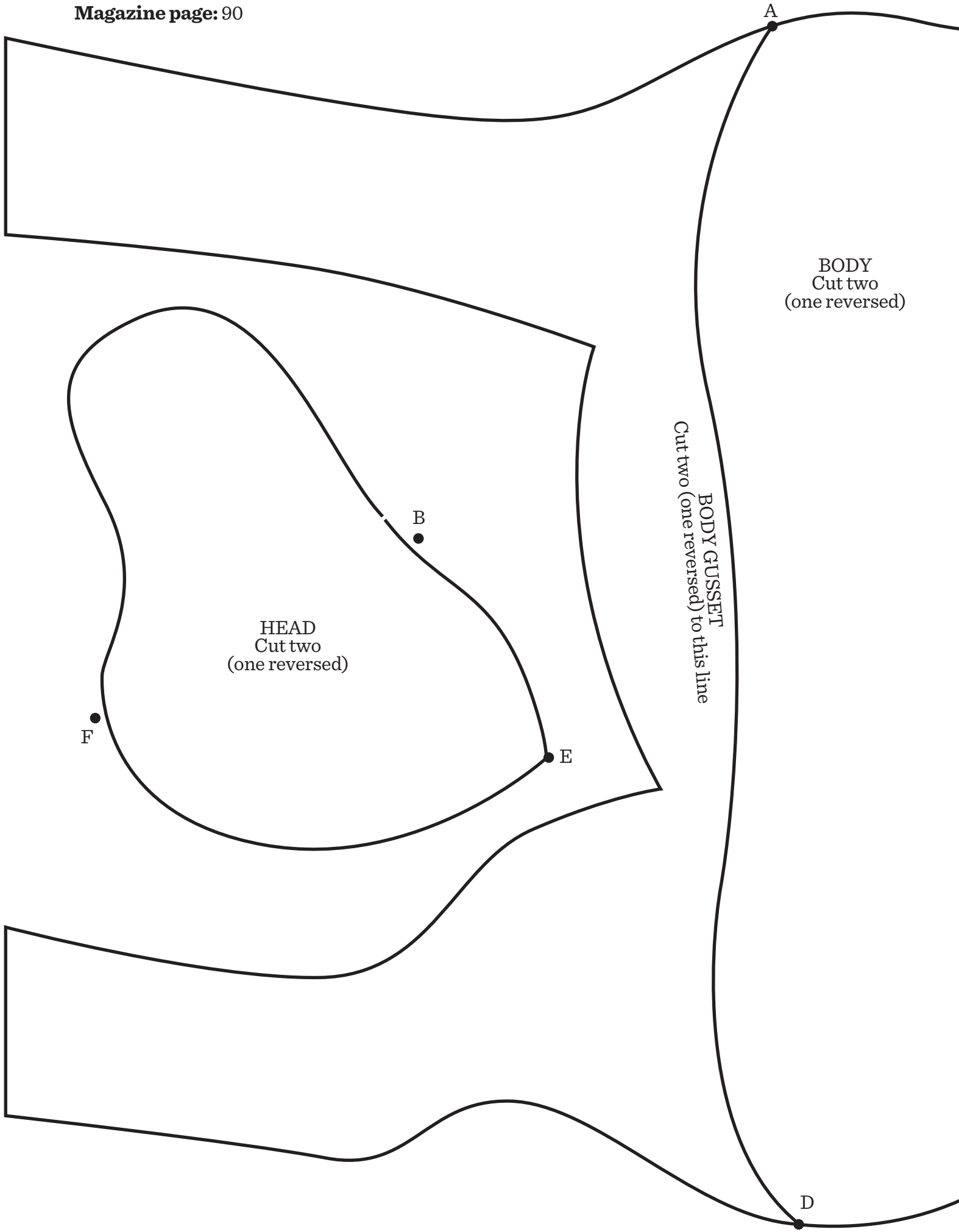




Title: Unicorn toy

Designer: Corinne Bradd

Magazine page: 90



BODY
Cut two
(one reversed)

HEAD
Cut two
(one reversed)

BODY GUSSET
Cut two (one reversed) to this line

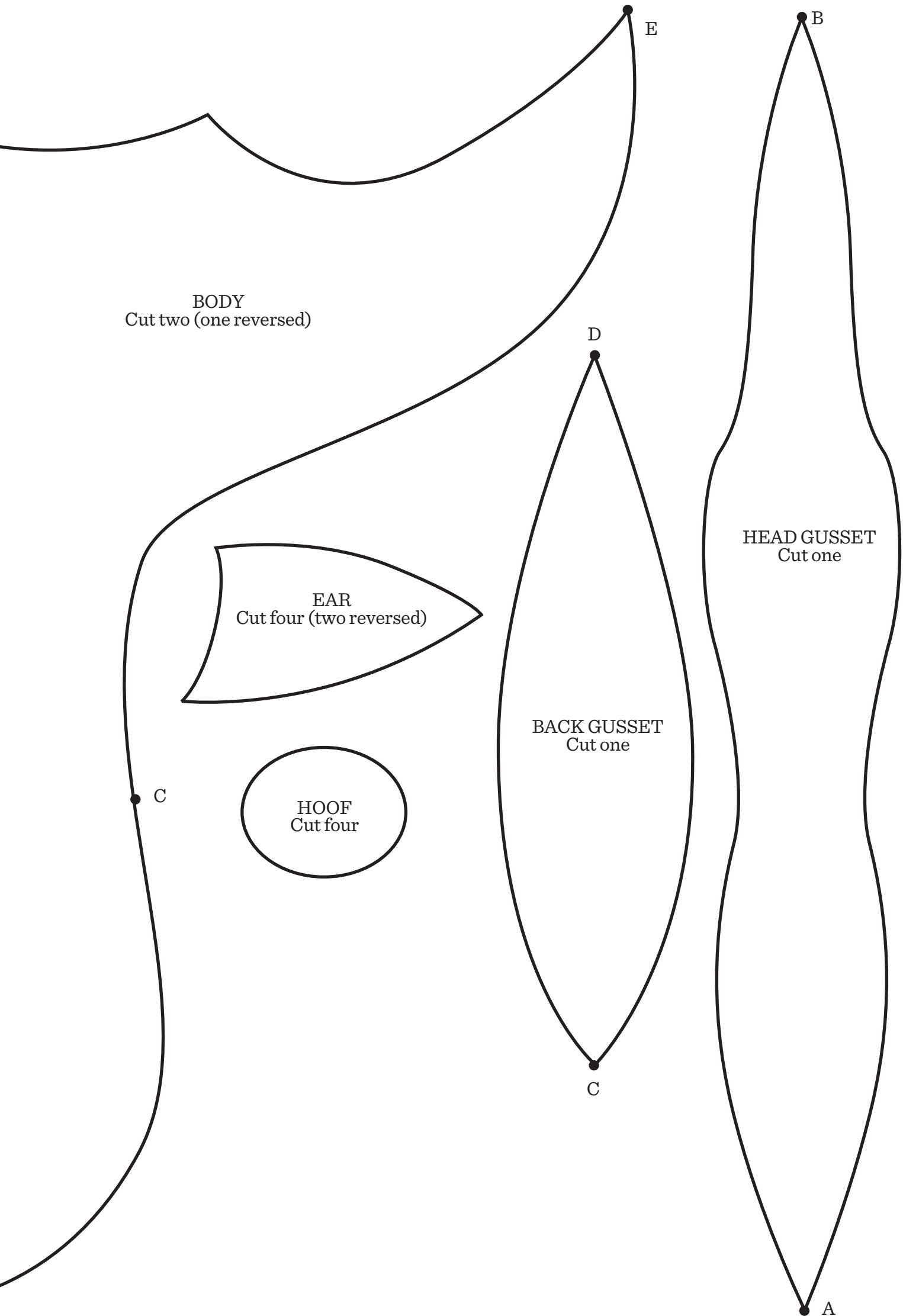
A

B

D

E

F



BODY
Cut two (one reversed)

EAR
Cut four (two reversed)

HOOF
Cut four

BACK GUSSET
Cut one

HEAD GUSSET
Cut one

E

B

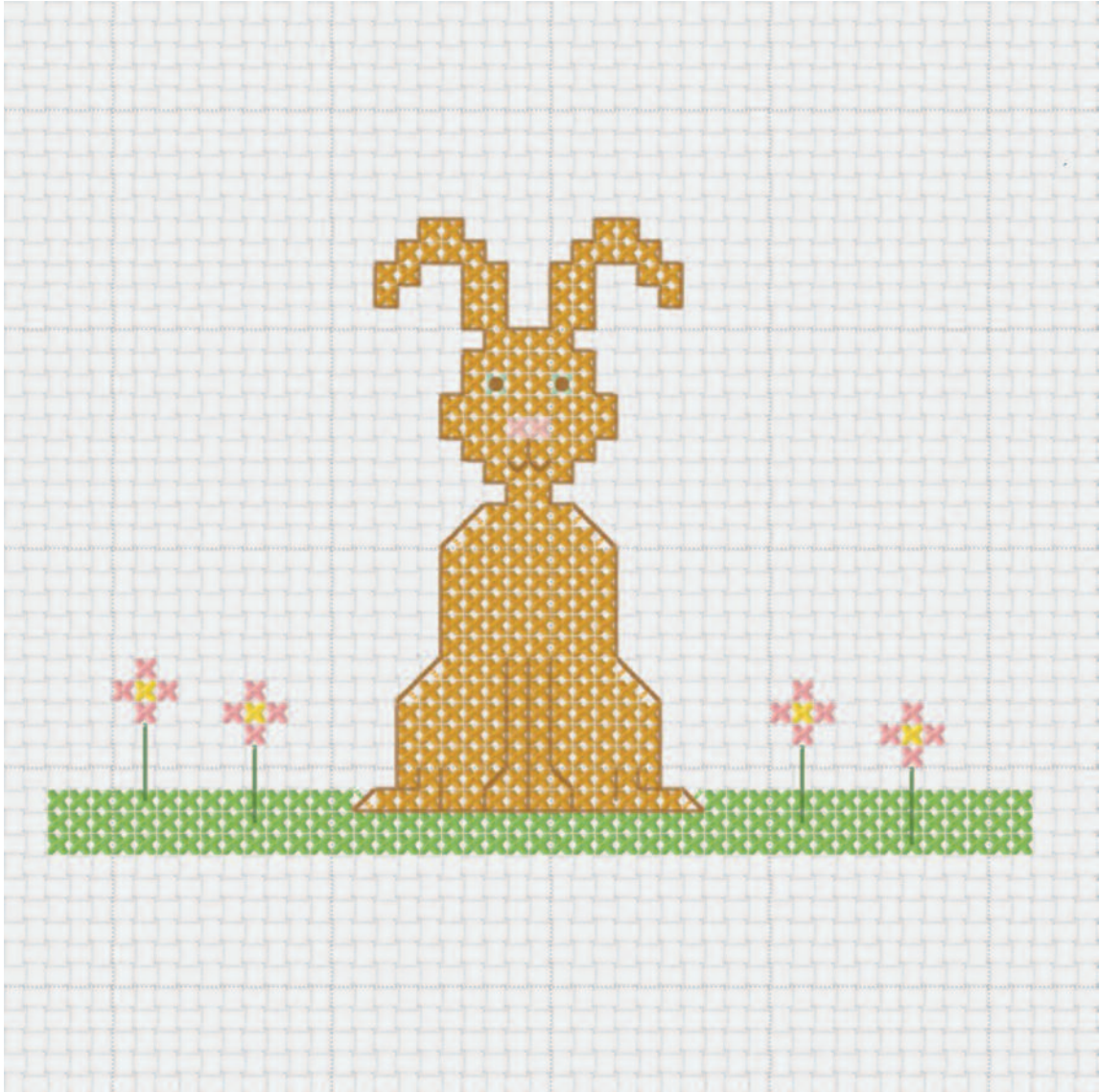
D

C

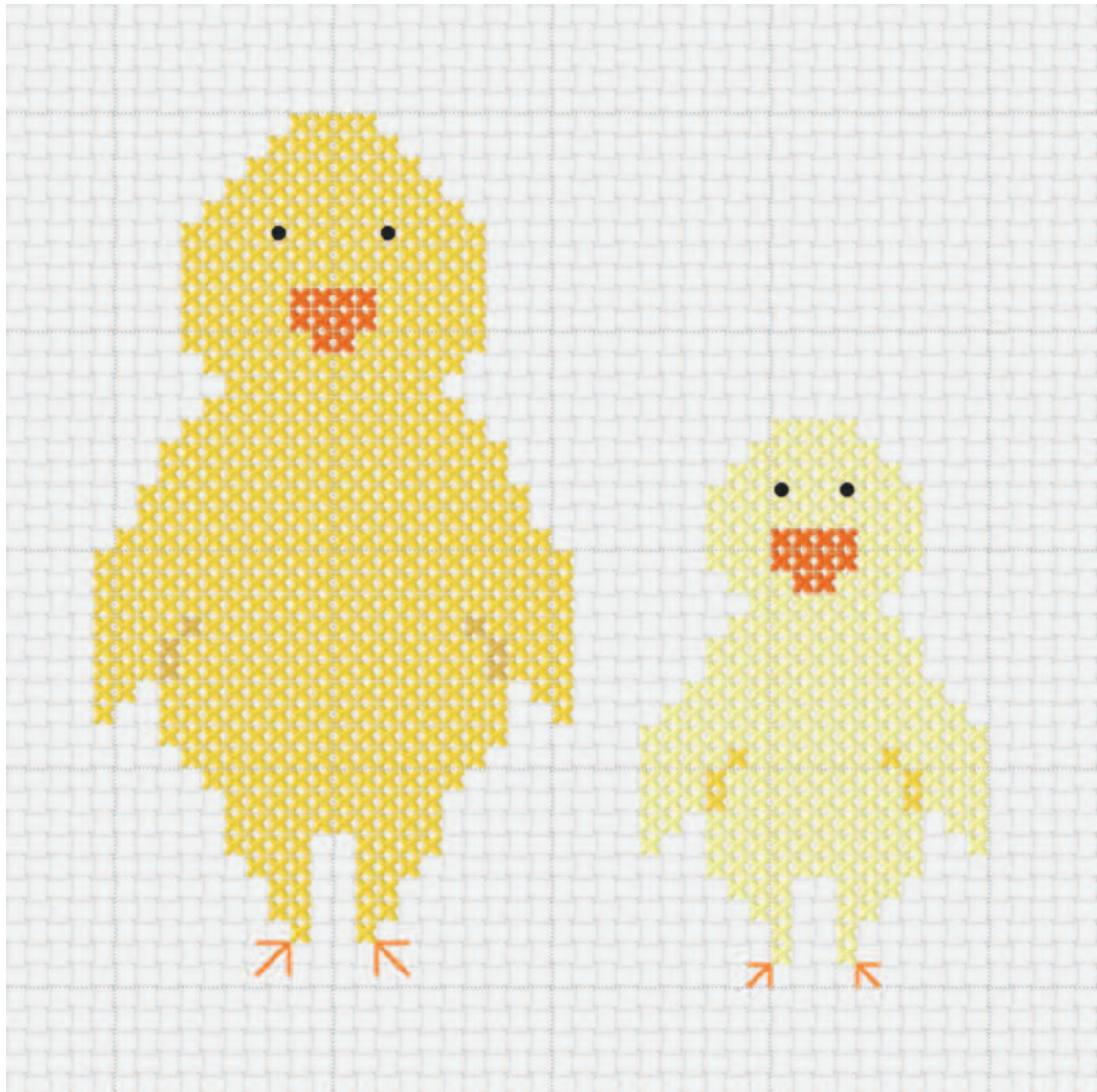
C

A

Collect & Keep Cross Stitch Library



Collect & Keep Cross Stitch Library



Collect & Keep Cross Stitch Library



Collect & Keep Cross Stitch Library



Collect & Keep Cross Stitch Library

